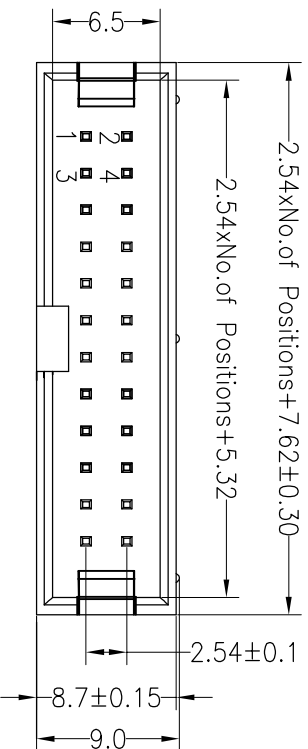




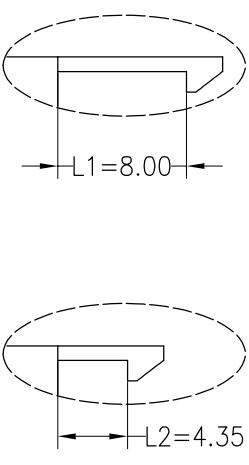
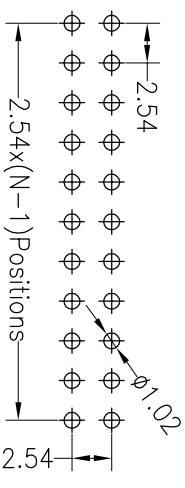
SPECIFICATIONS

Rated Current:3.0AMP
 Contact Resistance:20mΩ Max
 Withstand Voltage:1000V AC/DC
 Insulation Resistance:1000MΩ Min
 Operation Temperature:-40°C to +105°C

Contact Material:Brass
 Contact Plating:Au or Sn Over Ni
 Insulator Material:Polyester(UL94V-0)
 Standard: PA6T
 Max.Processing Temp: 230°C for 30-60 seconds
 (260°C for 10 seconds)



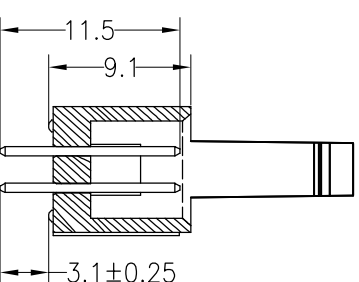
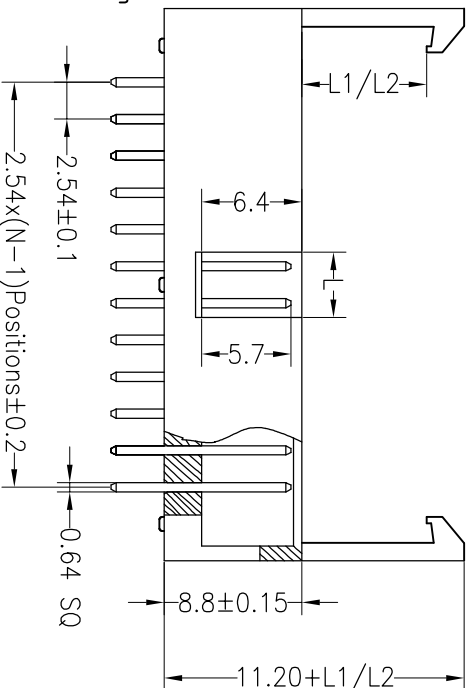
Recommended P.C.B Layout(Top Side)
 (PCB BOARD TOLERANCE±0.05)



Ordering Information

3215 XX S XX X B K00 A 0X

No. of Pins 6--64
 Contact Plating G0:Gold Flash
 G1:3U" Gold
 G2:5U" Gold
 G3:10U" Gold
 G4:15U" Gold
 G5:30U" Gold
 S0:Gold Flash/Tin
 Insulator Material Option
 A=BK-PRT
 G=BK-PA6T
 D=BK-PA46
 E=BK-PA9T
 F=BK-LCP
 Packing T=Tube
 A=Troy
 P=Tube+Cap
 Latch Type 1=Long Latch
 2=Short Latch



6P~8P	10P~64P
4.00	4.40

OPERATION		DRAW		SCALE		FIT		PART NO.	
X.X	±0.30	YYuSheng	18.08.14	UNIT	mm	A4	1/1	3215XXSXXBK00A0X	
X.XX	±0.20	CHECK		SIZE		SHEET		TITLE:	
X:XXX	±0.10	APPROVE		ANGLE		PROJ.		2.54mm Box Header H8.8mm 180°	
±3°	±3°	CHANGE		DIM		TOL			
REV	DATE	MODIFICATION DESCRIPTION		DIM		TOL			
1	2018.08.14	NEW DRAWING		1		±0.10			

JILN 深圳市锦凌电子有限公司
 SHENZHEN JINLING ELECTRONIC CO.,LTD
 Tel: 86-755-2997-5806/5802 Fax: 86-755-2997-5892